

Elevator Technology

Orinoco

The versatile moving walk for extended travel.



thyssenkrupp

The moving walk that takes you further.



With its impressive versatility you can count on our Orinoco moving walk to meet your every need. And when we say versatility, we really mean it: extended travel distance, convenient pallet width, inclined and horizontal configurations, as well as indoor or outdoor traffic or commercial applications. With Orinoco you can always be sure of just the right configuration for your project.

Enhanced connectivity

Since Orinoco carries passengers up to 200 meters, you can enhance mobility and connectivity in airports and metro stations worldwide.

Greater convenience

At airports and other crowded public spaces Orinoco's unique 1,600 mm wide pallets raise the bar on safety, convenience and capacity.

Spatially efficient

Combining upper and lower horizontal runs creates the perfect configuration to maximize both convenience and space usage, especially as Orinoco's compact truss also saves space.

Designed for versatility.

Whatever architecture Orinoco is enhancing – airports, metro stations or retail environments – this moving walk is like a chameleon. The numerous design features and options enable it to blend in perfectly with its surroundings. That creates an inviting atmosphere while also leaving a lasting impression on shoppers or passengers.

Aesthetic skirt lighting

Located above the skirt band, LEDs in light-diffusing channels, the full range of RGB colors and different modes of operation create attractive effects throughout your installation. Light barriers for automatic restart modes can also be seamlessly integrated into your moving walk.

Comb plate safety light

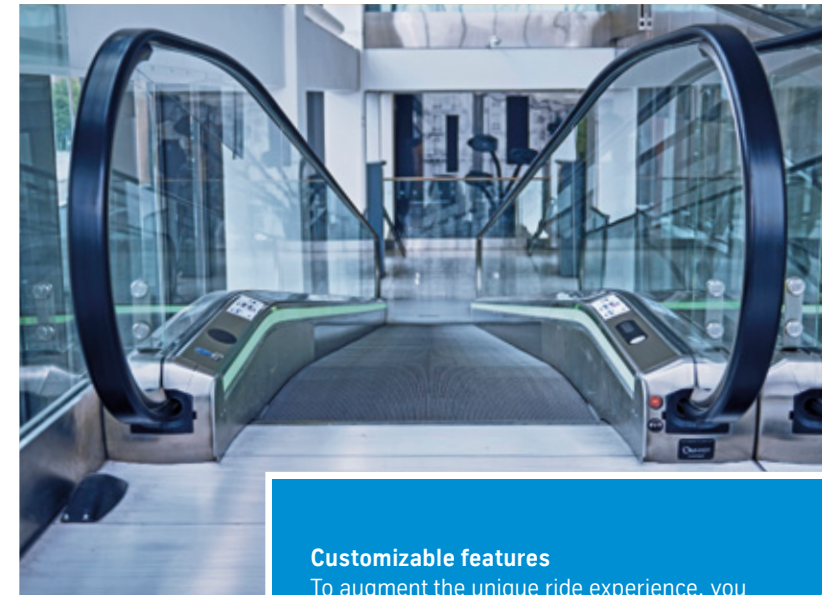
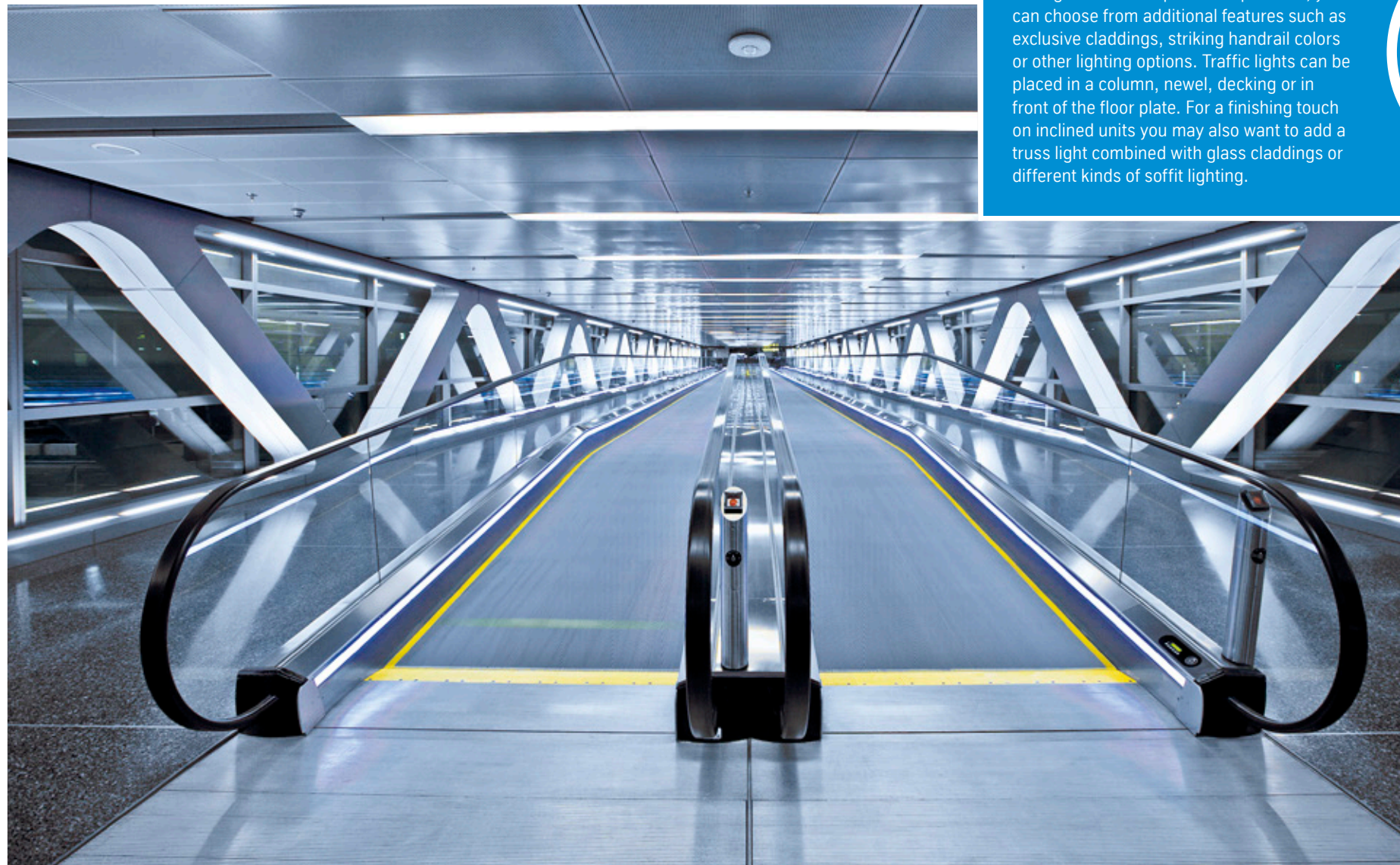
Located at Orinoco's entrance and exit, this comb plate light improves passenger safety. Available in white or green and red, it can also be used as a traffic light.

Stunning pallets and pallet gap lighting

Black or silver pallets are available, both with the option of yellow demarcation lines. And if you want something more extravagant, we'll make sure you get that too. Optional blue or green pallet gap lighting enhances passenger safety and adds to Orinoco's visual appeal.

Eye-catching combs and covers

When combined with accentuating comb segments, the various patterns and colors available for our durable combs and cover plates increase user safety while ensuring a distinctive look.

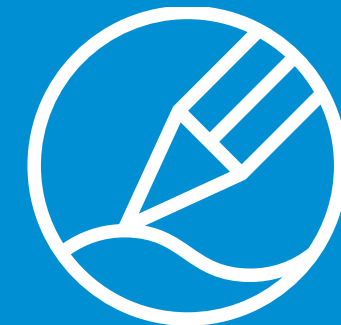


Unique front skirt

With its two-way flap system and additional skirt protector, Orinoco's unique handrail inlet can withstand the daily abuse of trolleys and carts. Available in black synthetic or stainless steel, it eliminates unsightly brushes or rubbers and provides lasting good looks. What's more, a kick-resistant safety contact reduces stops to increase Orinoco's availability.

Customizable features

To augment the unique ride experience, you can choose from additional features such as exclusive claddings, striking handrail colors or other lighting options. Traffic lights can be placed in a column, newel, decking or in front of the floor plate. For a finishing touch on inclined units you may also want to add a truss light combined with glass claddings or different kinds of soffit lighting.



Distinctive balustrades

Orinoco features four different balustrades: a slim glass version for a lighter, sophisticated look; a robust decking option for a more solid impression; a metal balustrade for a more industrial appearance; and a sandwich construction that's ideal for modern traffic applications. Several colors, finishes and LED lighting options increase the design possibilities.

Smartly engineered for exceptional quality.

Orinoco's versatile performance and exceptional quality are the result of our best-in-class engineering, advanced production systems and carefully chosen energy-efficiency features.



Fit-to-purpose guiding system

Precise engineering and flawless manufacturing are critical in ensuring the best possible ride quality. Orinoco's superior guiding system ensures exceptional passenger comfort certified to ISO 18738-2.



Precise guide rails – even pallet run

The guide rails are precisely aligned using best-in-class adjustment jigs to achieve a perfectly even pallet run for the best possible ride comfort.

Guiding rollers – reliable pallet run

The pallets are guided on the track through a nose profile to reduce wear and tear, noise emissions, and maintenance.

Smooth run rails – jolt-free pallet run

The rails enable a smooth transition of the pallet chain rollers from the guide rails to the pallet chain sprocket, eliminating the polygon effect through the entire moving walk and thus enhancing ride quality.



Pallet fastening engineered to perform

Our unique fastening concept uses hollow axles that connect the pallets and chain with solid bolts. The outcome is easier installation, operation and maintenance.



Pallet bolts – convenient and failsafe

Connecting the pallets and chain with bolts makes assembly foolproof and disassembly a snap for maintenance.

No pallet chain axles – easier maintenance

The hollow axle eliminates the need for a pallet chain axis, providing easy access to the interior for maintenance purposes.

Oil caps – clean and safe pallets

Oil caps at the end of the hollow axle prevent oil from leaking and polluting the pallet tread; and that keeps pallets clean and safe.

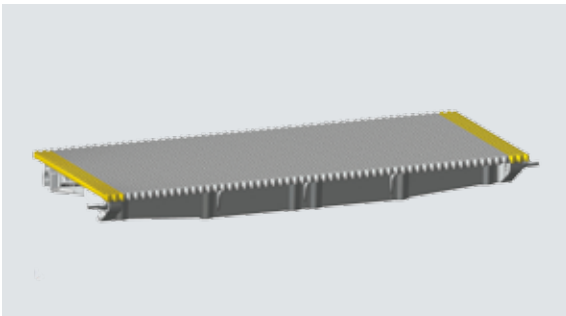
Strengthen your safety commitment.

Whether you’re planning a commercial building or infrastructure project, Orinoco is the perfect partner to ensure passenger safety. Proven product configurations and around 50 safety features and options that include motion safety devices will protect your investment and your passengers’ wellbeing.



Safety
The safety of people using an Orinoco moving walk is a matter of major importance to us. Safety, however, can only be maximized if your moving walk is designed with user behavior in mind. That's why we have taken the latest safety findings into account in designing Orinoco and included features that help to mitigate misuse.

Long pallets
405 mm long pallets reduce pallet gaps. This improves safety and provides a seamless look.



High balustrades
Choose between slim and robust balustrades, available with a continuous height of 1,100 mm. This minimizes the risk of passengers falling over the balustrade.



Brake wear monitoring
Automatically switches off the drive when worn brake linings are detected. This helps prevent malfunctioning and flags maintenance requirements.

Excerpt of main safety features

	Inclined		Horizontal	
	Standard	Option	Standard	Option
Motion safety				
Operational brake				
Auxiliary brake on main or motor shaft*				
Comb plate switch horizontal				
Emergency stop button at top and bottom				
Additional stop button				
Handrail inlet protection device				
Skirt safety switches				
Proactive safety				
Fire alarm shut down				
Anti-climbing barrier				
1,100 mm balustrade				
Access help				
Comb plate lighting				
Protecting gratings				
Flywheel cover				
Skirt brushes or rubber deflectors				
Skirt with anti-friction coating				
Pallet gap lighting				
Traffic lights				
Yellow diecast aluminium comb				
Yellow plastic comb				
Yellow pallet demarcation				
Removal aid for the controller				
Component protection				
30 mA FI protection				
Full motor protection				
Phase sequence relay				
Brake wear indicator				
Brake function indicator				
Chain tension switch				
Cover plate open contacts				
Drive chain monitoring				
Handrail broken device				
Missing pallet indicator				
Pallet band speed monitoring				
Handrail speed monitoring				
Pallet run guard				
Cables tray				
Building interfaces				
Bollards				
Sprinklers				
Maintenance barrier				

* above 6m standard



Improve your carbon footprint.

With man-made climate change an ever-more serious threat in many regions of the world, it has become increasingly important to minimize the carbon footprint of a building by reducing, as far as possible, its CO₂ emissions. One major aspect of this is a building's energy efficiency. Although a moving walk in a building consumes very little energy, we are constantly striving to improve the sustainability performance of our moving walks.

Energy efficiency class

Based on the ISO 25745-3 standard and depending on your final configuration, Orinoco delivers the highest possible energy efficiency – highest energy efficiency class A+++.

Energy-saving options

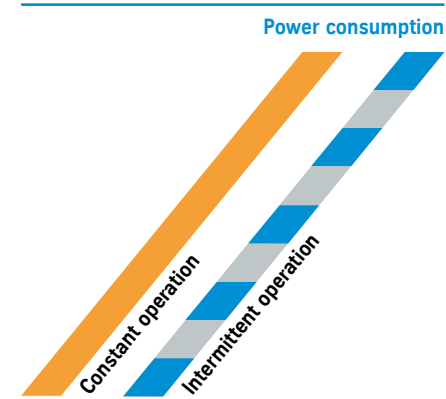
LED lighting cuts energy consumption by up to 90%. And you can further reduce Orinoco's carbon footprint by opting for different operating modes like intermittent operation or energy-efficiency features like Star Delta – up to 90% reduction in energy consumption.

ETA drive

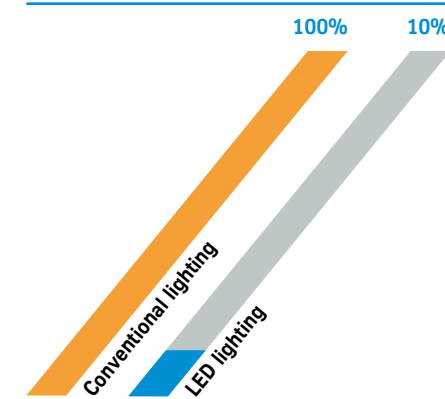
Thanks to 96% efficiency and lubrication that lasts 40,000 hours, our ETA drive is good news for both you and the environment – increased efficiency, reduced maintenance.

A+++
Energy efficiency

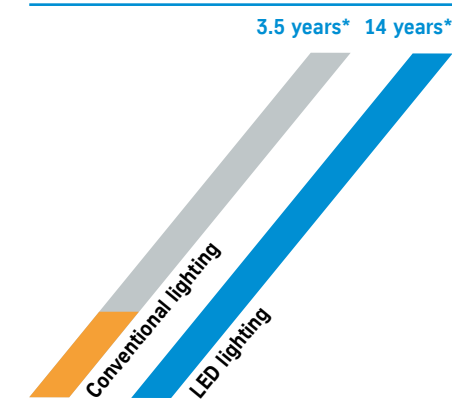
Mode of operation



Lighting energy consumption



Lighting lifetime



* 12 hours a day, 7 days a week

thyssenkrupp moves people – the future of urban mobility.

In 40 short years, we've become one of the world's leading elevator companies with unique engineering capabilities, offering next-generation solutions like MULTI, the ropeless elevator, ACCEL, an accelerated people mover, and MAX, a cloud-based predictive maintenance service. Whether building a new state-of-the-art system or optimizing and modernizing existing ones, our solutions deliver crucial energy and time efficiencies, helping to address the challenges of urbanization and transform cities into the best places to live.



Sales of over
€ 7.5 billion

50,000+
employees

Figures for our Elevator Technology business

A trusted partner

We support our customers throughout their project lifecycle, from the design to the end-of-life phase. Every step of the way, we strive to fully understand their needs and consistently deliver the safest, highest quality passenger transportation solutions, maintenance and modernization packages.

Through our internal technical support function, ITS (International Technical Services), thyssenkrupp trains its service technicians in a multibrand portfolio, enabling them to successfully service more than 1.2 million units under maintenance.

thyssenkrupp – the diversified industrial group

engineering.tomorrow.together – three words that describe who we are, what we do, and how we do it. Driven by global megatrends such as urbanization and the need for efficient use of environmental resources, our global community of more than 156,000 colleagues works together with our customers to harness our engineering expertise and strive for technological and business solutions that satisfy the demand for “more” in a “better” way.

Find out more: www.thyssenkrupp.com



One World Trade Center



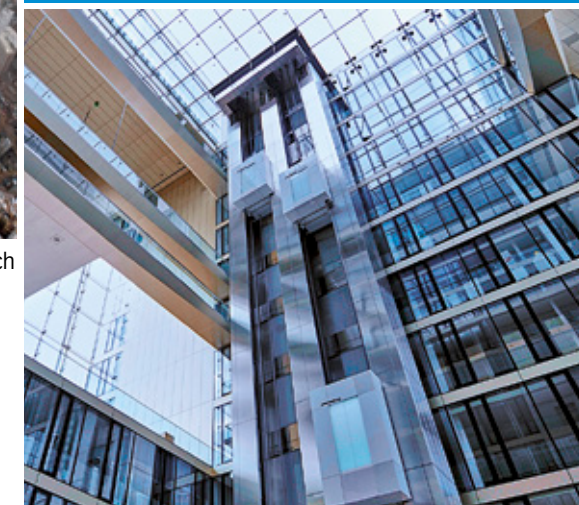
Makkah Clock Tower / Source © SL Rasch

We provide smart and innovative products for a wide variety of applications:

- Passenger and freight elevators
- Escalators and moving walks
- Passenger boarding bridges
- Stair and platform lifts
- Customized service and modernization solutions



Mercedes Benz



thyssenkrupp Quartier

Elevator Technology

thyssenkrupp Elevator AG
thyssenkrupp Allee 1
45143 Essen
Germany
www.thyssenkrupp-elevator.com